

TECHNICAL MANUAL

DIRECT SUPPORT MAINTENANCE

REPAIR PARTS AND SPECIAL TOOLS LIST

(INCLUDING DEPOT MAINTENANCE REPAIR

PARTS AND SPECIAL TOOLS)

FOR

MAST AB-621/G

(NSN 5985-00-782-5278)

TECHNICAL MANUAL }
No. 11-5985-334-30P }

HEADQUARTERS
DEPARTMENT OF THE ARMY,
WASHINGTON, DC, 21 September 1983

DIRECT SUPPORT MAINTENANCE
REPAIR PARTS AND SPECIAL TOOLS LIST
(INCLUDING DEPOT MAINTENANCE REPAIR
PARTS AND SPECIAL TOOLS)
FOR
MAST AB-621/G (NSN 5985-00-782-5278)

Current as of 23 May 1983

REPORTING ERRORS AND RECOMMENDING IMPROVEMENTS
You can help improve this manual. If you find any mistakes or if you know of a way to improve the procedures, please let us know. Mail your letter, DA Form 2028 (Recommended Changes to Publications and Blank Forms), or DA Form 2028-2 located in the back of this manual direct to: Commander, US Army Communications-Electronics Command and Fort Monmouth, ATTN: DR-SEL-ME-MP, Fort Monmouth, NJ 07703.
In either case, a reply will be furnished direct to you.

Table of Contents

		Page	Illus Figure
SECTION	I.	1	
	II. Repair Parts List	5	
GROUP	00 Mast AB-621/G	5	1
	Mast Carrier and Masts	9	2
	Upper Guy Ring Assembly	11	3
	Launcher Base and Elevator Assembly	13	4
	Launcher Top and Guide Plate Assembly	15	5
	Elevator Platform Assembly	17	6
	Reel Assembly	19	7
	Brake Assembly	21	8
	01 Launcher Assembly (No parts authorized)		
SECTION	III. Special Tools List (Not applicable)		
	IV. National Stock Number and Part Number Index	22	

* This manual supersedes TM 11-5985-334-34P, 6 July 1977.

SECTION I

INTRODUCTION

1. Scope

This manual lists spares and repair parts; special tools; special test, measurement, and diagnostic equipment (TMDE), and other special support equipment required for performance of direct support maintenance of the AB-621/G. It authorizes the requisitioning and issue of spares and repair parts as indicated by the source and maintenance codes.

2. General

This Repair Parts and Special Tools List is divided into the following sections:

a. Section II. Repair Parts List. A list of spares and repair parts authorized for use in the performance of maintenance. The list also includes parts which must be removed for replacement of the authorized parts. Parts lists are composed of functional groups in numeric sequence, with the parts in each group listed in figure and item number sequence.

b. Section III. Special Tools List. Not applicable.

c. Section IV. National Stock Number and Part Number Index. A list, in National item identification number (NIIN) sequence, of all National stock numbers (NSN) appearing in the listings, followed by a list, in alphameric sequence, of all part numbers appearing in the listings. National stock numbers and part numbers are cross-referenced to each illustration figure and item number appearance.

3. Explanation of Columns

a. Illustration. This column is divided as follows:

(1) *Figure number.* Indicates the figure number of the illustration on which the item is shown.

(2) *Item number.* The number used to identify item called out in the illustration.

b. Source, Maintenance, and Recoverability (SMR) Codes.

(1) *Source code.* Source codes indicate the manner of acquiring support items for maintenance, repair, or overhaul of end items. Source codes are entered in the first and second positions of the Uniform SMR Code format as follows:

<i>Code</i>	<i>Definition</i>
PA	Item procured and stocked for anticipated or known usage.
XB	Item is not procured or stocked. If not available through salvage, requisition.

NOTE

Cannibalization or salvage maybe used as a source of supply for any items source coded above except those coded XA and aircraft support item as restricted by AR 700-42.

(2) *Maintenance code.* Maintenance codes are assigned to indicate the levels of maintenance authorized to USE and REPAIR support items. The maintenance codes are entered in the third and fourth positions of the Uniform SMR Code format as follows:

(a) The maintenance code entered in the third position will indicate the lowest maintenance level authorized to remove, replace, and use the support item. The maintenance code entered in the third position will indicate one of the following levels of maintenance:

<i>Code</i>	<i>Application/Explanation</i>
O	Support item is removed, replaced, used at the organizational level.
F	Support item is removed, replaced, used at the direct support level.

(b) The maintenance code entered in the fourth positions indicates whether the item is to be repaired and identifies the lowest maintenance level with the capability to perform complete repair (i.e., all authorized maintenance functions). This position will contain one of the following maintenance codes:

<i>Code</i>	<i>Application/Explanation</i>
F	The lowest maintenance level capable of complete repair of the support item is the direct support level.
Z	Nonreparable. No repair is authorized.

(3) *Recoverability code.* Recoverability codes are assigned to support items to indicate the disposition action on unserviceable items. The recoverability code is entered in the fifth position of the Uniform SMR Code format as follows:

<i>Recoverability Codes</i>	<i>Definition</i>
Z	Nonreparable item. When unserviceable, condemn and dispose at the level indicated in position 3.

Recoverability

Codes

Definition

F - **Reparable item.** When uneconomically reparable, condemn and dispose at the general support level.

c. *National Stock Number.* Indicates the National stock number assigned to the item and will be used for requisitioning purposes.

d. *Federal Supply Code for Manufacturer (FSCM).* The FSCM is a 5-digit numeric code listed in SB 708-41/42 which is used to identify the manufacturer, distributor, or Government agency, etc.

e. *Part Number.* Indicates the primary number used by the manufacturer (individual, company, firm, corporation, or Government activity), which controls the design and characteristics of the item by means of its engineering drawings, specifications, standards, and inspection requirements to identify an item or range of items.

NOTE

When a stock numbered item is requisitioned, the repair part received may have a different part number than the part being replaced.

f. *Description.* Indicates the Federal item name and, if required, a minimum description to identify the item.

g. *Unit of Measure (U/M).* Indicates the standard of the basic quantity of the listed item as used in performing the actual maintenance function. This measure is expressed by a two-character alphabetical abbreviation (e.g., ea, in, pr, etc). When the unit of measure differs from the unit of issue, the lowest unit of issue that will satisfy the required units of measure will be requisitioned.

h. *Quantity Incorporated in Unit.* Indicates the quantity of the item used in the breakout shown on the illustration figure, which is prepared for a functional group, subfunctional group, or an assembly.

4. Special Information

a. The following publications pertain to the AB-621/G and its components:

TM 11-5985-334-15, Mast AB-621/G

TM 11-5985-334-20E Mast AB-621/G

b. National stock numbers (NSN's) that are missing from P source coded items have been applied for and will be added to this TM by future change/revision when they are entered in the Army Master Data File (AMDF). Until the NSN's are established and published, submit exception requisitions to: Commander, US Army Communications-Electronics Command and Fort Monmouth, ATTN: DR-SEL-MM, Fort Monmouth, New Jersey 07703 for the part required to support your equipment.

5. How to Locate Repair Parts

a. When National stock number or part number is unknown.

(1) *First.* Using the table of contents, determine the functional group within which the item belongs. This is necessary since illustrations are prepared for functional groups and listings are divided into the same groups.

(2) *Second.* Find the illustration covering the functional group to which the item belongs.

(3) *Third.* Identify the item on the illustration and note the illustration figure and item number of the item.

(4) *Fourth.* Using the Repair Parts Listing, find the figure and item number noted on the illustration.

b. When National stock number or part number is known.

(1) *First.* Using the index of National Stock Numbers and Part Numbers, find the pertinent National stock number or part number. This index is in NIIN sequence followed by a list of part numbers in alphameric sequence, cross-referenced to the illustration figure number and item number.

(2) *Second.* After finding the figure and item number, locate the figure and item number in the repair parts list.

6. Abbreviations

Not applicable.

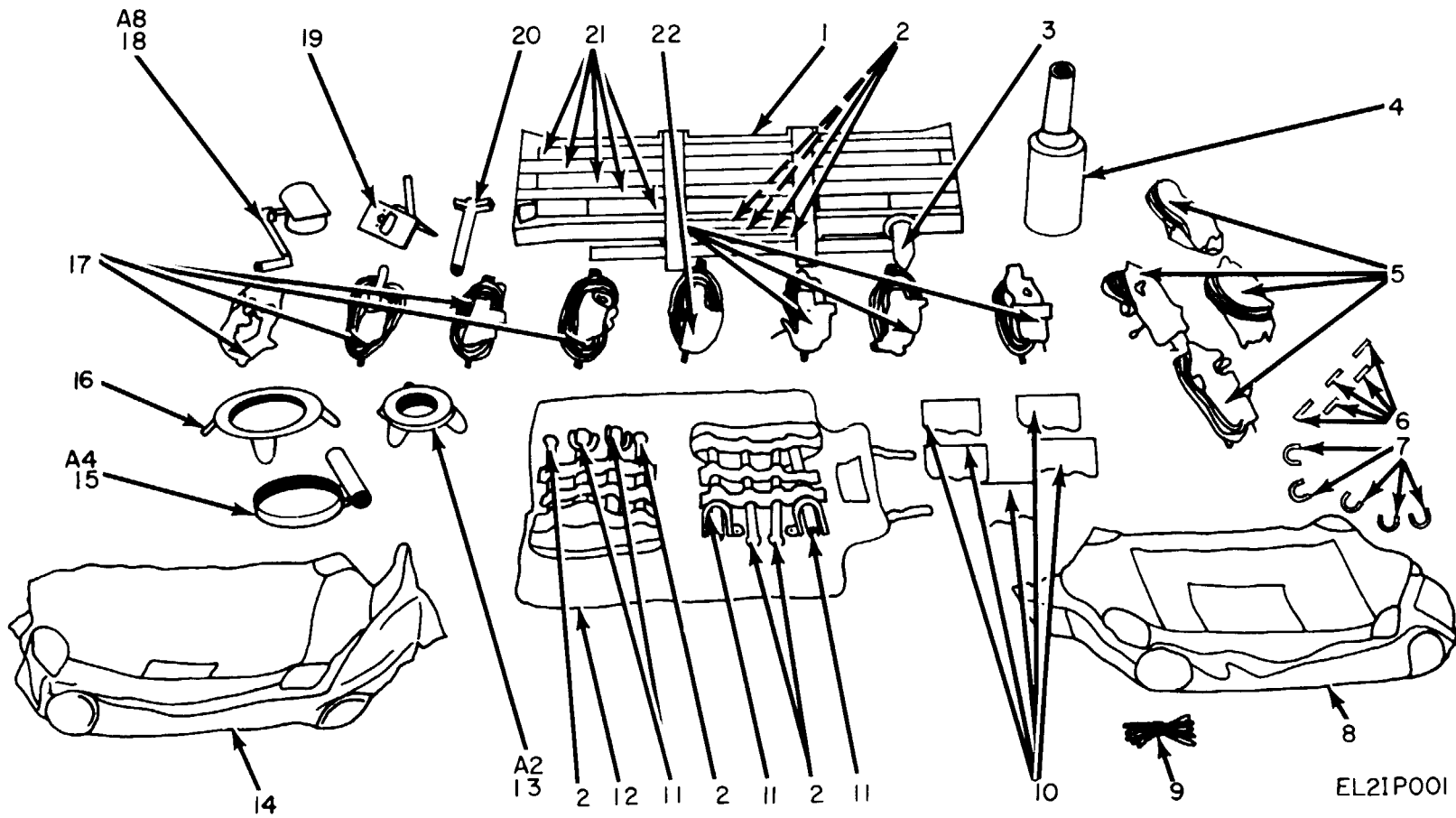
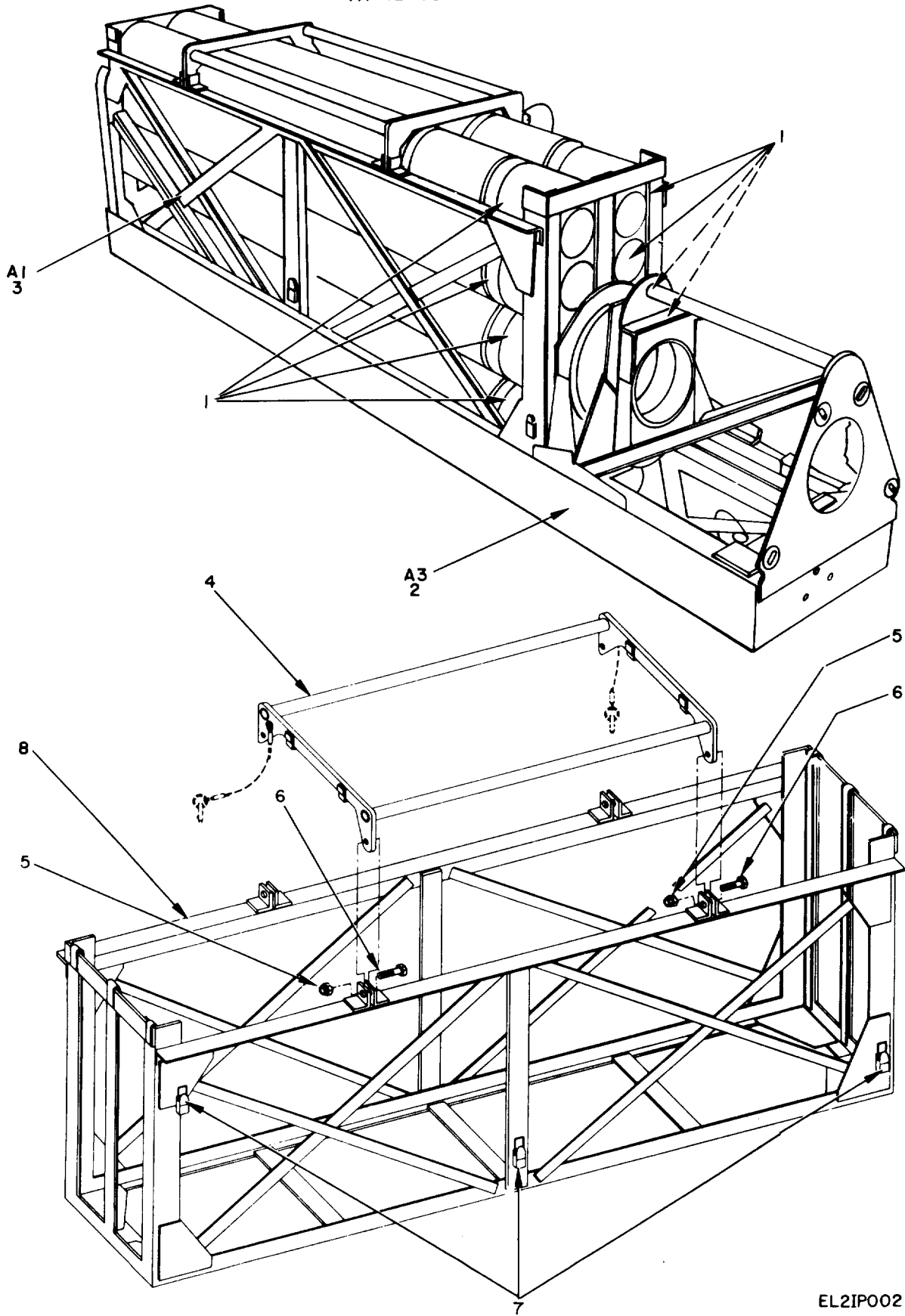


Figure 1. Mast AB-621/G.

SECTION II (1) ILLUSTRATION		TM11-5985-334-30P		(6)		(7)		(8)	
(A) FIG NO	(B) ITEM NO	(2) SMR CODE	(3) NATIONAL STOCK NUMBER	(4) FSCM	(5) PART NUMBER	DESCRIPTION	USABLE ON CODE	U/M	QTY INC IN UNIT
GROUP 00 MAST AB-621/G									
1	1	PAOZZ	5820-00-395-8807	80063	SC-D-66302	CARRYING CASE,GUY S		EA	1
1	2	XBOZZ	4030-00-187-5261	80058	GP-2	STAKE,GUY		EA	8
1	3	PAOZZ	5120-00-224-4105	81349	GGG-H-86	HAMMER,HAND		EA	1
1	4	PAOZZ	5985-00-237-0728	80063	SM-D-561874	SLEEVE,ANTENNA SUPP		EA	1
1	5	PAOZZ	5975-00-405-4507	80063	SM-D-561885	GUY		EA	4
1	6	PAOZZ	5306-00-405-4588	80063	SC-B-99880	BOLT,EYE		EA	5
1	7	PAOZZ	4030-00-159-7127	80063	SC-C-99881	SHACKLE		EA	5
1	8	PAOZZ	5985-00-233-9248	80063	SM-C-561895-1	BAG,SIGNAL EQUIPMEN		EA	1
1	9	PAOZZ	5985-00-233-9252	80063	SM-B-561884	HALYARD,ANTENNA		EA	1
1	10	PAOZZ	4030-00-189-6156	80063	SM-C-561898	GUY ATTACHMENT		EA	5
1	11	PAOZZ	4030-00-291-9354	80058	GP-112/G	STAKE,GUY		EA	4
1	12	PAOZZ	4030-00-189-6237	80063	SM-D-561896	CASE,STAKE,GUY		EA	1
1	13	PAOZZ	4030-00-189-6154	80063	SM-D-561869	GUY RING ASSEMBLY,U		EA	1
1	14	PAOZZ	8105-00497-9628	80058	BG-102	GUY,BAG		EA	1
1	15	PAOZZ	5985-00-233-9249	80063	SM-C-561864	PEEP SIGHT ASSEMBLY		EA	1
1	16	PAOZZ	4030-00-189-6155	80063	SM-D-561868	GUY RING ASSEMBLY,M		EA	1
1	17	PAOZZ	5975-00-405-4505	80063	SM-D-561889	GUY		EA	4
1	18	PAOFF	5985-01-133-3584	80063	SM-D-561878	WINCH ASSEMBLY		EA	1
1	19	PAOFF	5985-01-124-8751	80063	SM-C-561860	LEVEL MAST ASSEMBLY		EA	1
1	20	PAOZZ	5120-00-169-2664	80063	SM-D-561899	WRENCH,SPANNER		EA	1
1	21	PAOZZ	4030-00-298-1382	80058	GP-113/G	STAKE,GUY		EA	5
1	22	PAOZZ	5975-00-405-4506	80063	SM-D-561887	GUY		EA	4



EL2IPO02

Figure 2. Mast Carrier and Masts (Sheet 1 of 2).

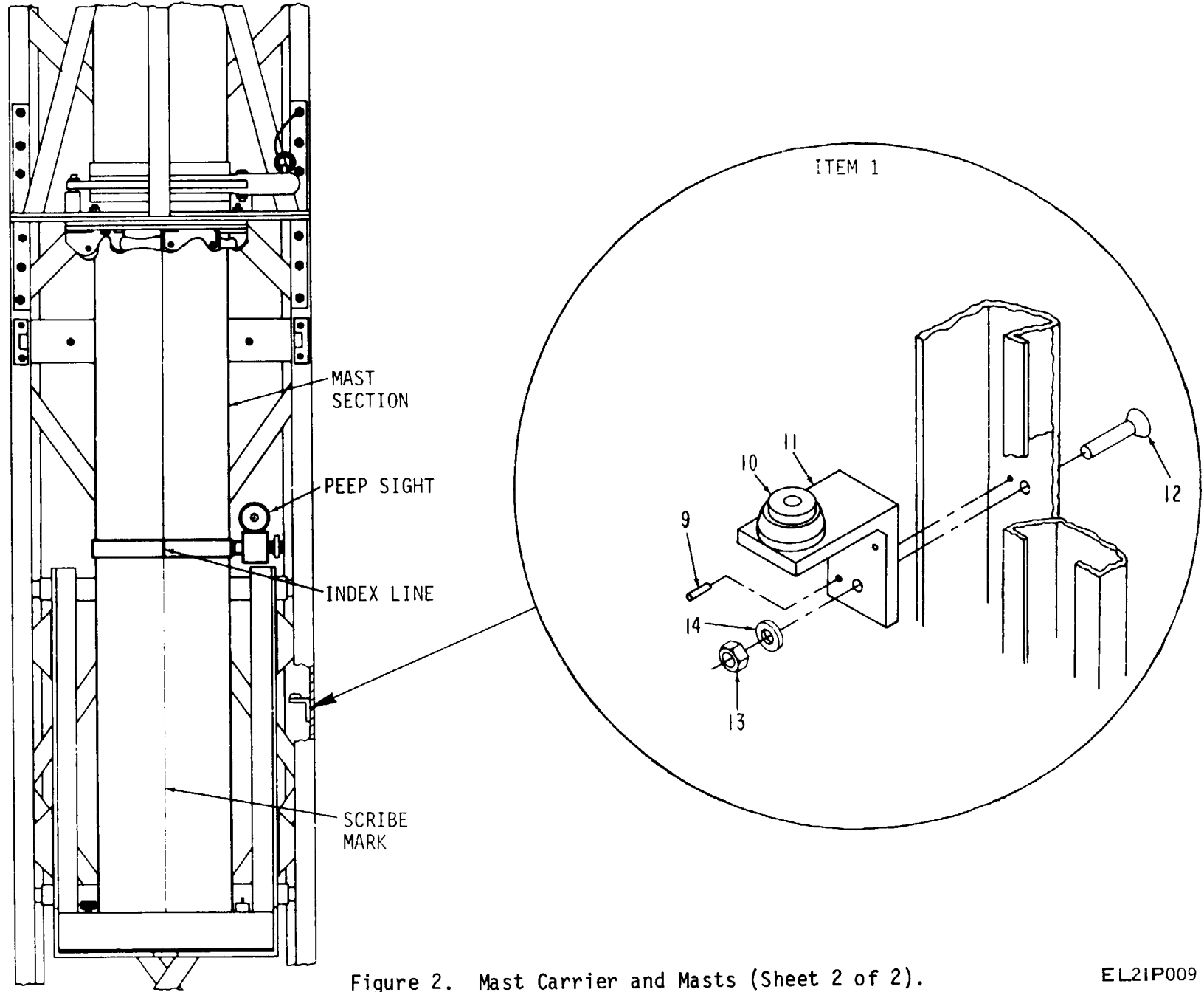
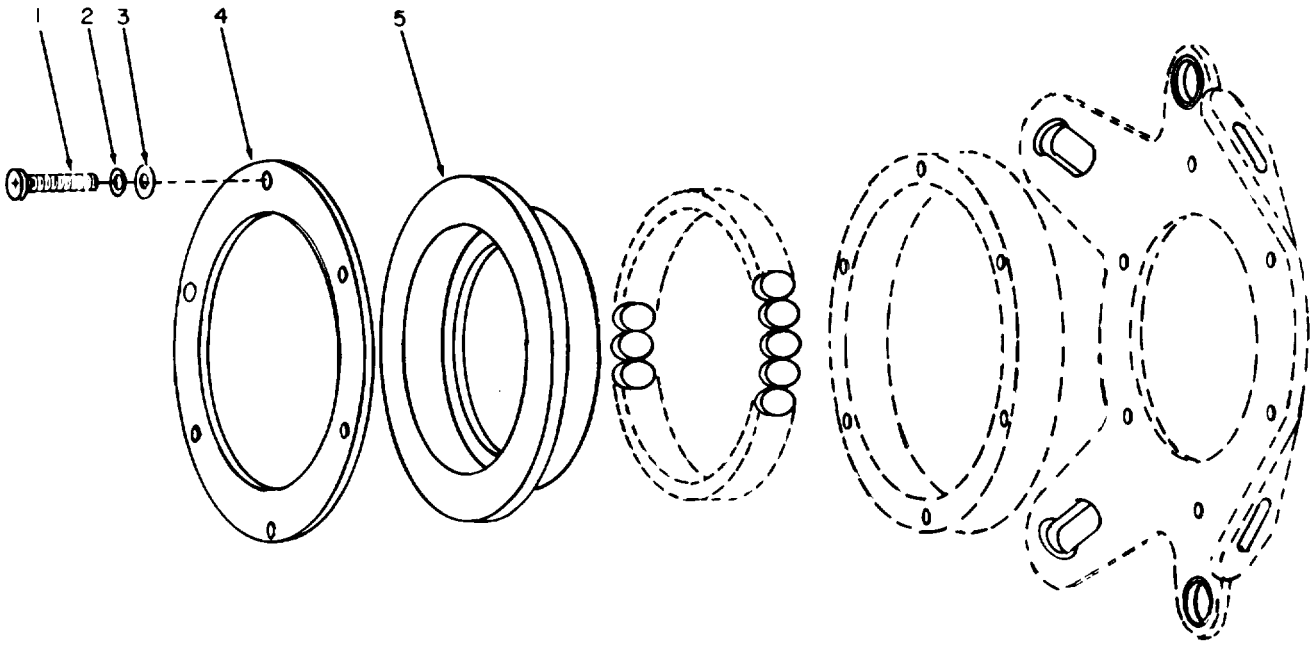


Figure 2. Mast Carrier and Masts (Sheet 2 of 2).

EL2IP009

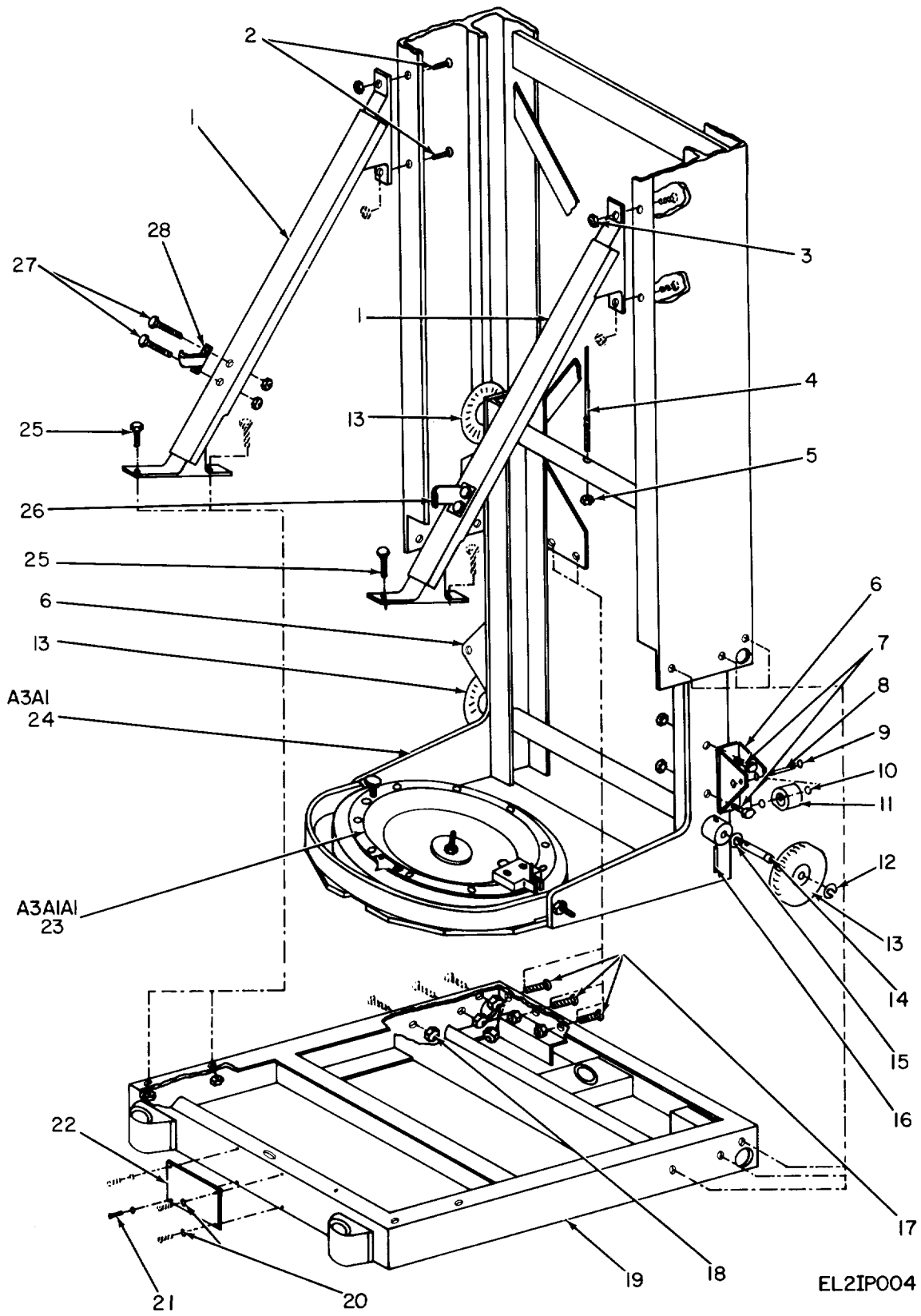
SECTION II		TM11-5985-334-30P								
(1)	(2)	(3)	(4)	(5)	(6)	(7)	(8)			
ILLUSTRATION					DESCRIPTION		QTY			
(A)	(B)	NATIONAL		PART			INC			
FIG	ITEM	STOCK	FSCM	NUMBER		USABLE ON CODE	U/M			
NO	NO	NUMBER						IN	UNIT	
2	1	PAOZZ	5985-00-242-4286	80063	SM-D-561875			EA	8	
2	2	PAOFF	5985-00-233-9247	80063	SM-D-561801			EA	1	
2	3	PAOFF	5985-00-244-1693	80063	SM-D-561881			EA	1	
2	4	PAFZZ	5340-01-146-7450	80063	SM-D-561883			EA	1	
2	5	PAFZZ	5310-00-059-9264	96906	MS21045C6			EA	15	
2	6	PAFZZ	5306-00-582-9588	88044	AN6C13A			EA	2	
2	7	XBFZZ	5340-00-200-8630	80063	SC-C-76220			EA	3	
2	8	XBFFF		80063	SM-E-561882			EA	1	
2	9	XBFZZ	5315-00-840-0906	96906	MS16562-210			EA	2	
2	10	XBFZZ		80063	SM-C-728942			EA	1	
2	11	XBFZZ		80063	SM-B-423625			EA	1	
2	12	XBFZZ		96906	MS24694-C54			EA	2	
2	13	XBFZZ	5310-00-059-9263	96906	MS21046-C3			EA	2	
2	14	XBFZZ	5310-00-167-0812	88044	AN960C10L			EA	2	



EL2IP003

Figure 3. Upper Guy Ring Assembly.

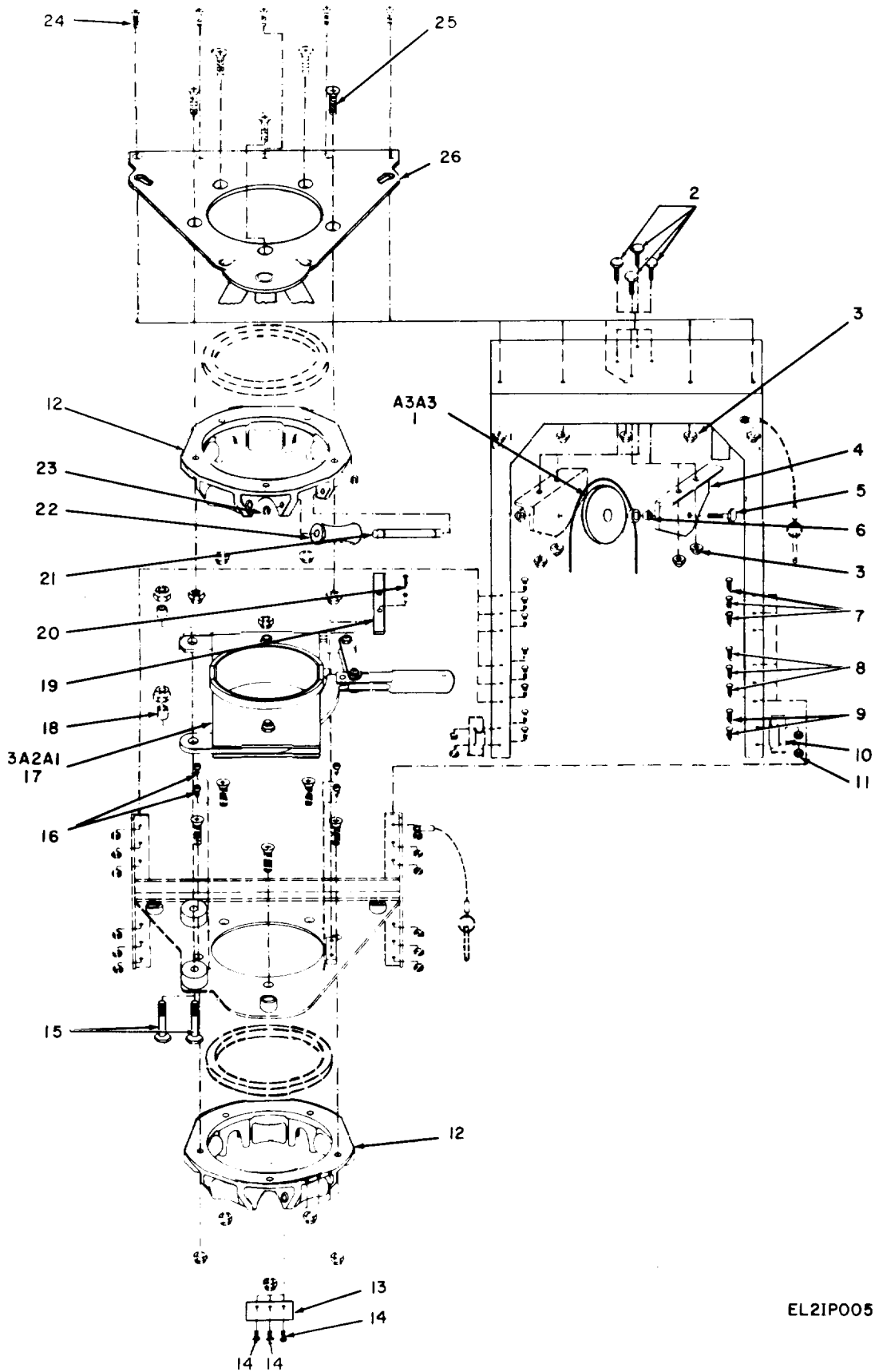
SECTION II		TM11-5985-334-30P						
(1)	(2)	(3)	(4)	(5)	(6)	(7)	(8)	
ILLUSTRATION		NATIONAL			DESCRIPTION		QTY	
(A)	(B)	STOCK		PART			INC	
FIG	ITEM	NUMBER	FSCM	NUMBER		USABLE ON CODE	U/M	
NO	NO						IN	
							UNIT	
3	1	PAFZZ	5305-00-050-9234	96906	MS51957-68		EA	6
3	2	PAFZZ	5310-00-933-8120	96906	MS35338-138		EA	6
3	3	PAFZZ	5310-00-550-5054	96906	MS15795-809		EA	6
3	4	XBFZZ		80063	SM-B-561872-1		EA	1
3	5	XBFZZ		80063	SM-B-561871-1		EA	1



EL2IP004

Figure 4. Launcher Base and Elevator Assembly.

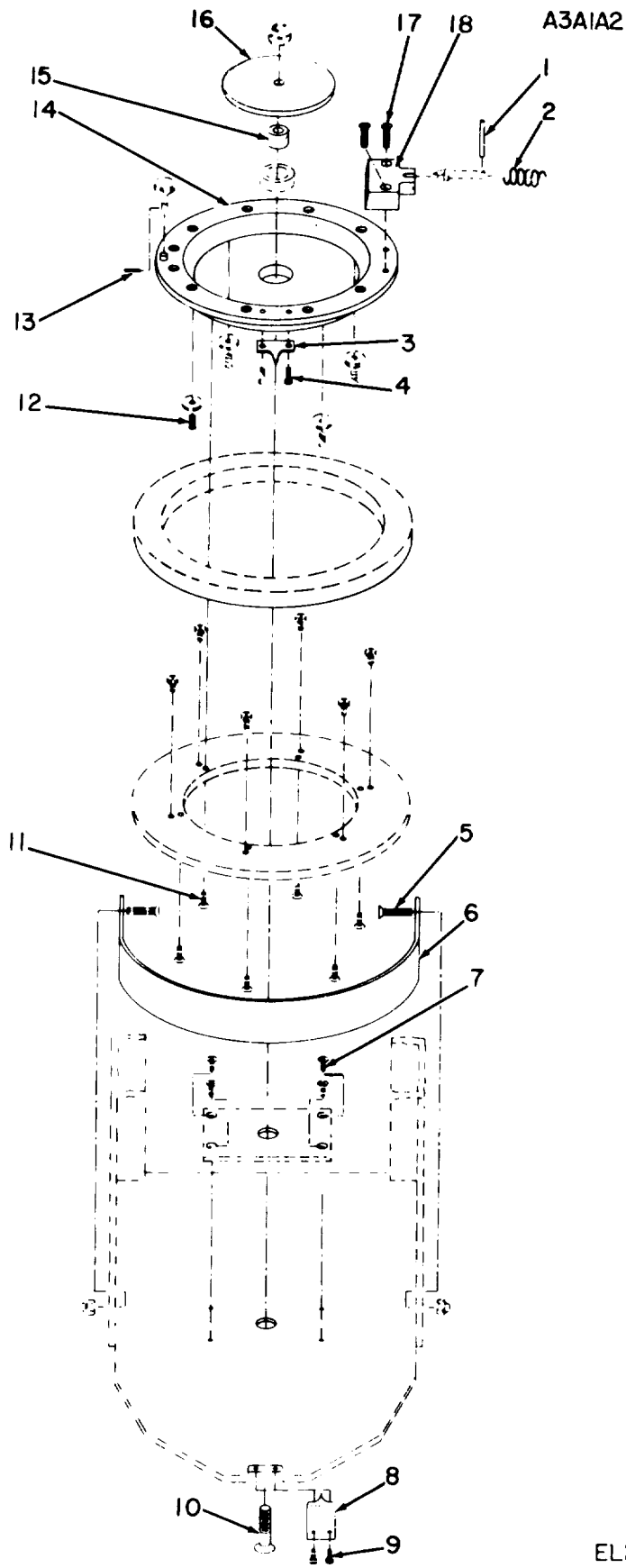
SECTION II (1) ILLUSTRATION		TM11-5985-334-30P		(6)		(7)	(8)		
(A) FIG NO	(B) ITEM NO	(2) SMR CODE	(3) NATIONAL STOCK NUMBER	(4) FSCM	(5) PART NUMBER	DESCRIPTION	USABLE ON CODE	U/M	QTY INC IN UNIT
4	1	XBFZZ		80063	SM-D-561846	BRACE ASSEMBLY		EA	2
4	2	XBFZZ		88044	AN509C10R10	SCREW, MACHINE		EA	8
4	3	PAFZZ	5310-00-263-2862	96906	MS21045C3	NUT, SELF-LOCKING, HE		EA	22
4	4	PAFZZ	5975-01-012-5445	80063	SM-B-561855	GUY		EA	1
4	5	PAFZZ	5310-00-823-8835	96906	MS21045C5	NUT, SELF-LOCKING, HE		EA	4
4	6	XBFZZ		80063	SM-B-561827-1	BRACKET, WHEEL		EA	2
4	7	PAFZZ	5306-00-156-2327	88044	AN3C6A	BOLT, MACHINE		EA	8
4	8	XBFZZ		80063	SM-B-561835-1	AXLE		EA	2
4	9	PAFZZ	5365-00-598-1840	96906	MS16633-4015	RING, RETAINING		EA	8
4	10	PAFZZ	5310-00-685-3744	88044	AN960C8	WASHER, FLAT		EA	8
4	11	XBFZZ		80063	SM-B-561911	WHEEL		EA	2
4	12	PAFZZ	5365-00-804-7645	96906	MS16624-4050	RING, RETAINING		EA	4
4	13	XBFZZ		80063	SM-B-561825	WHEEL ASSEMBLY		EA	4
4	14	XBFZZ		80063	SM-B-5618261	AXLE		EA	8
4	15	PAFZZ	5310-00-167-0806	88044	AN960C816	WASHER, FLAT		EA	4
4	16	PAFZZ	5315-00-242-7272	96906	MS35678-32	PIN, GROOVED, HEADLES		EA	4
4	17	PAFZZ	5305-00-207-2793	96906	MS24694C98	SCREW, MACHINE		EA	12
4	18	PAFZZ	5310-00-982-4988	96906	MS21045C4	NUT, SELF-LOCKING, HE		EA	14
4	19	XBFZZ		80063	SM-D-561805	BASE ASSEMBLY		EA	1
4	20	PAFZZ	5310-00-933-8118	96906	MS35338-135	WASHER, LOCK		EA	4
4	21	PAFZZ	5305-00-054-5646	73734	23021	SCREW MACHINE		EA	4
4	22	XBFZZ		80063	SM-D-558718-9	PLAT		EA	1
4	23	PAFZZ	5985-00-189-6606	80063	SM-D-561845	CUP ELEVATOR ASSEMB		EA	1
4	24	PAFZZ		80063	SM-B-561823	ELEVATOR ASSEMBLY		EA	1
4	25	PAFZZ	5306-00-150-9527	88044	AN3C5A	BOLT, MACHINE		EA	4
4	26	XBFZZ	5340-00-157-7657	80063	SM-B-561848-1	STRIKE, CATCH		EA	1
4	27	PAFZZ	5306-00-156-2332	88044	AN3C13A	BOLT, MACHINE		EA	4
4	28	XBFZZ	5340-00-157-7649	80063	SM-B-561848-2	STRIKE, CATCH		EA	1



EL21P005

Figure 5. Launcher Top and Guide Plate Assembly.

SECTION II (1) ILLUSTRATION		TM11-5985-334-30P		(6)		(7)	(8)		
(A) FIG NO	(B) ITEM NO	(2) SMR CODE	(3) NATIONAL STOCK NUMBER	(4) FSCM	(5) PART NUMBER	DESCRIPTION	USABLE ON CODE	U/M	QTY INC IN UNIT
5	1	XBFZZ		80063	SM-B-561856	PULLEY,GROOVE		EA	1
5	2	PAFZZ	5306-00-156-2339	88044	AN4C7A	BOLT,MACHINE		EA	4
5	3	PAFZZ	5310-00-982-4988	96906	MS21045C4	NUT,SELF-LOCKING,HE		EA	14
5	4	XBFZZ		80063	SM-B-561857-1	BRACKET,PULLEY		EA	2
5	5	PAFZZ	5306-00-156-2343	88044	AN4C13A	BOLT,MACHINE		EA	1
5	6	XBFZZ		80063	SM-B-56185-1	SPACER,PULLEY		EA	1
5	7	XBFZZ	5305-00-527-4414	88044	AN509C10R10	SCREW		EA	8
5	8	XBFZZ		88044	AN509C616R26	SCREW		EA	8
5	9	XBFZZ	5305-00-052-9802	88044	AN509C10R8	SCREW,MACHINE		EA	8
5	10	XBFZZ	5340-00-157-7631	80063	SM-B-561923-1	STRIKE,CATCH		EA	4
5	11	PAFZZ	5310-00-263-2862	96906	MS21045C3	NUT,SELF-LOCKING,HE		EA	22
5	12	PAFZZ	5985-00-189-6629	80063	SM-D-561808	RING ASSEMBLY GUIDE		EA	2
5	13	XBFZZ		80063	SM-B-561854-1	PLATE,INSTRUCTION		EA	1
5	14	XBFZZ		88044	SMB-561917-1	SCREW,DRIVE		EA	3
5	15	PAFZZ	5306-00-582-9009	88044	AN6C17A	BOLT,MACHINE		EA	2
5	16	PAFZZ	5305-00-913-4084	80205	NAS1191C3P4	SCREW,SELF-LOCKING		EA	4
5	17	PAFZZ	5985-00-189-6632	80063	SM-D-561811	BRAKE ASSEMBLY MAST		EA	1
5	18	XBFZZ		80063	SM-B-561821-1	SPACER		EA	2
5	19	XBFZZ		80063	SM-B-561822-1	RETAINER,BRAKE		EA	1
5	20	XBFZZ	5305-00-068-5287	88044	AN507C832R7	SCREW,MACHINE		EA	2
5	21	XBFZZ		80063	SM-B-561810-1	SHAFT,ROLLER		EA	10
5	22	XBFZZ		80063	SM-B-561809-1	ROLLER,GUIDE		EA	10
5	23	PAFZZ	5365-00-286-8718	96906	MS16633-4037	RING,RETAINING		EA	20
5	24	XBFZZ	5305-00-054-9242	88044	AN509C416R14	SCREW,MACHINE		EA	7
5	25	PAFZZ		88044	AN509C616R17	SCREW		EA	10
5	26	XBFZZ		80063	SM-E-561807	GUIDE,PLATE		EA	1



EL2IP006

Figure 6. Elevator Platform Assembly.

SECTION II (1) ILLUSTRATION		TM11-5985-334-30P				(6)	(7)	(8)
(A) FIG NO	(B) ITEM NO	(2) SMR CODE	(3) NATIONAL STOCK NUMBER	(4) FSCM	(5) PART NUMBER	DESCRIPTION	USABLE ON CODE U/M	QTY INC IN UNIT
6	1	XBFZZ	5315-00-058-9756	96906	MS16562-227	PIN, SPRING	EA	1
6	2	PAFZZ	5360-00-469-3710	96906	MS24585C155	SPRING, HELICAL, COMP	EA	1
6	3	XBFZZ		80063	SM-B-561843-1	POINTER, INNER	EA	1
6	4	XBFZZ		88044	AN509C416R15	SCREW	EA	2
6	5	PAFZZ	5305-00-054-6649	96906	MS51957-25	SCREW, MACHINE	EA	2
6	6	XBFZZ		80063	SM-C-561844-1	GUARD, AZIMUTH RING	EA	1
6	7	XBFZZ	5305-00-781-9478	88044	AN509C8R6	SCREW, MACHINE	EA	4
6	8	XBFZZ		80063	SM-B-561842-1	POINTER, OUTER	EA	1
6	9	PAFZZ	5305-00-054-6668	96906	MS51957-43	SCREW, MACHINE	EA	2
6	10	XBFZZ		80063	SM-B-561912	SCREW, MACHINE	EA	6
6	11	PAFZZ	5305-00-066-7328	96906	MS24693C27	SCREW, MACHINE	EA	6
6	12	PAFZZ	5305-00-206-3677	88044	AN507C632R4	SCREW, MACHINE	EA	4
6	13	PAFZZ	5315-00-058-9698	96906	MS16562-191	PIN, SPRING	EA	1
6	14	XBFZZ		80063	SM-D-561828-2	CUP, ELEVATOR	EA	1
6	15	XBFZZ		80063	SM-B-561834-1	SLEEVE	EA	1
6	16	XBFZZ		80063	SM-B-561916-1	WASHER	EA	1
6	17	XBFZZ		88044	AN509C10R13	SCREW, MACHINE	EA	2
6	18	XBFZZ		80063	SM-B-561836-32	PIN, INDEX, ASSEMBLY	EA	1

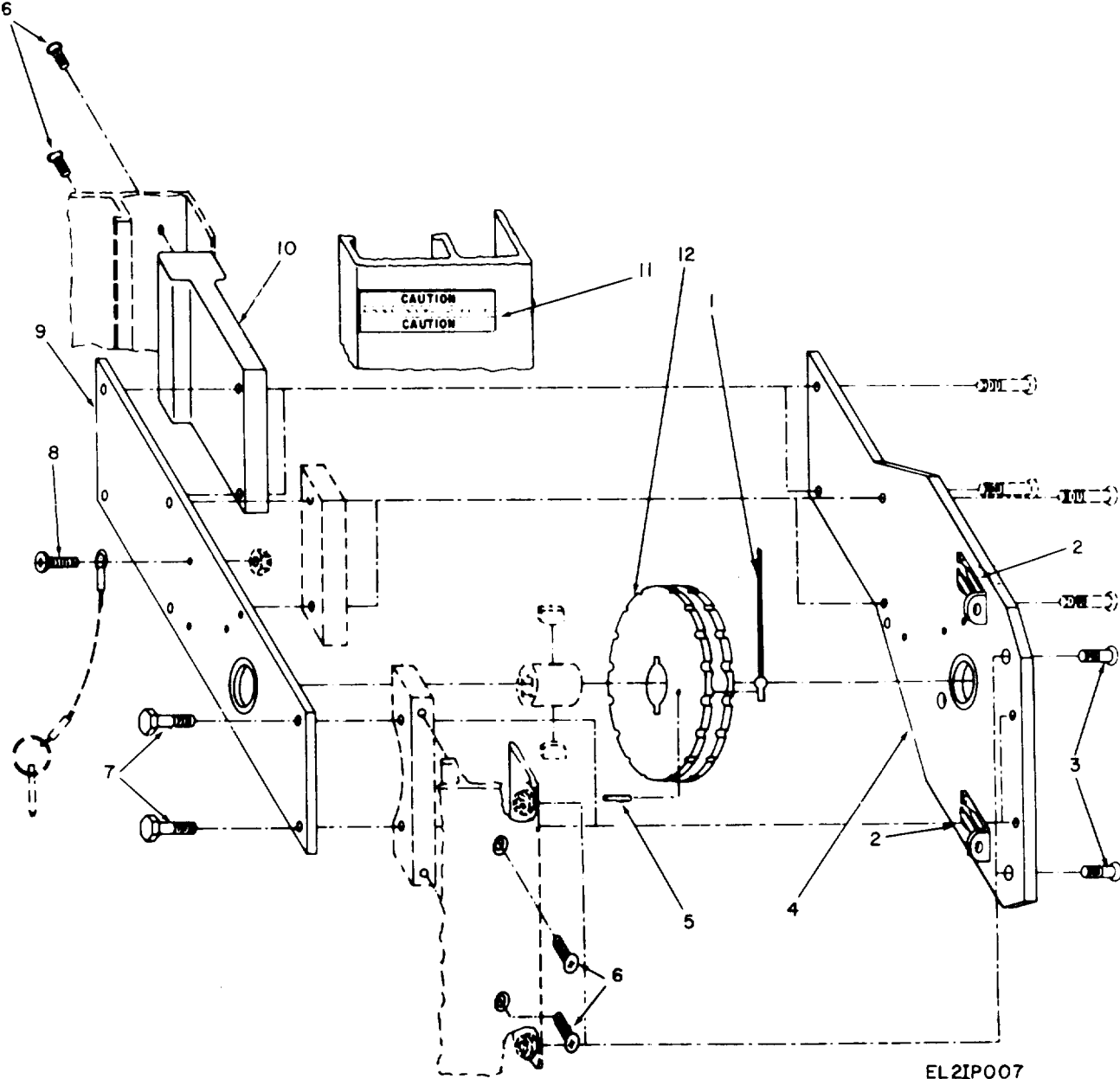
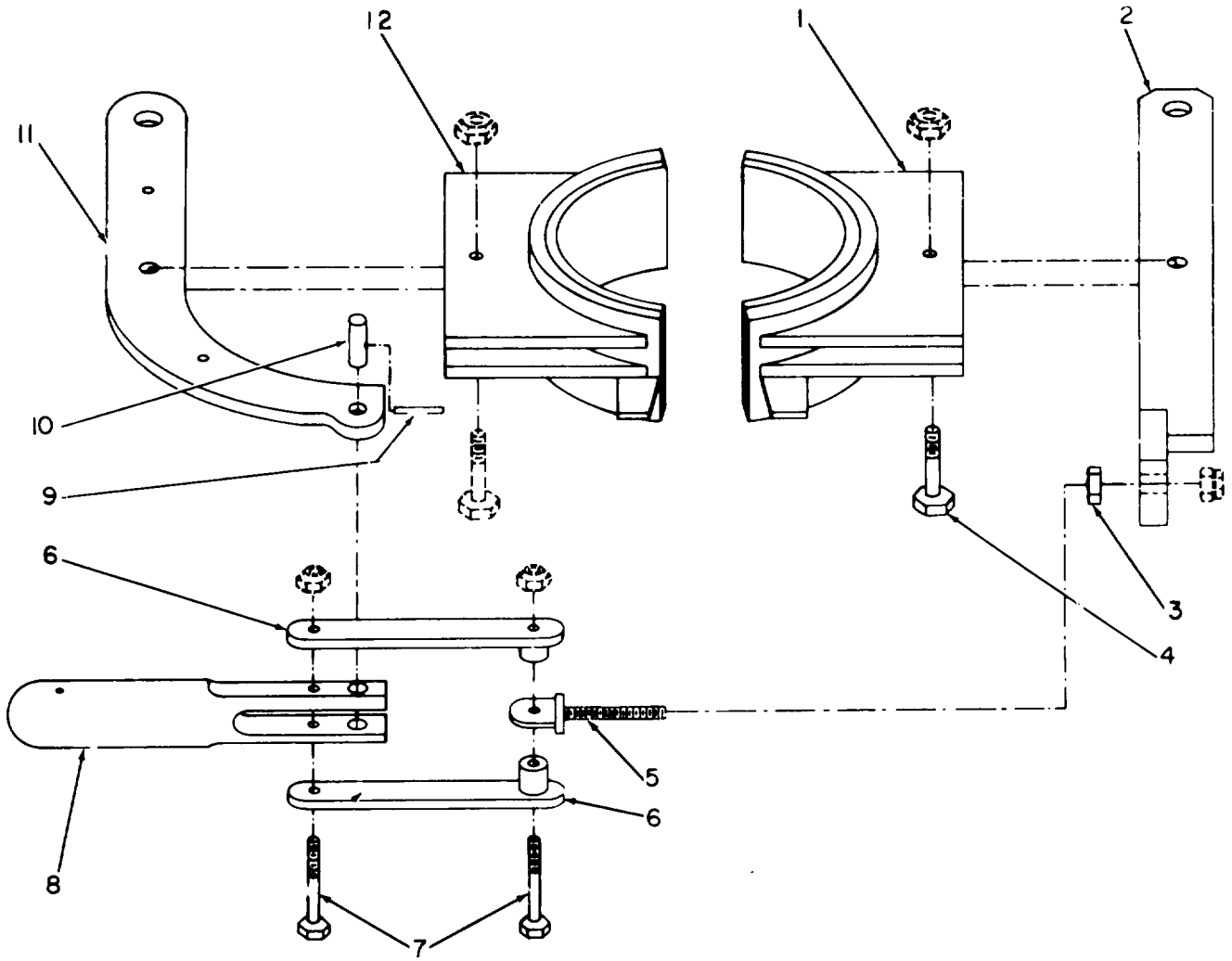


Figure 7. Reel Assembly.

SECTION II		TM11-5985-334-30P						
(1)	(2)	(3)	(4)	(5)	(6)	(7)	(8)	
ILLUSTRATION		NATIONAL			DESCRIPTION		QTY	
(A)	(B)	STOCK	FSCM	PART		USABLE ON CODE	INC	
FIG	ITEM	NUMBER		NUMBER			IN	
NO	NO						UNIT	
7	1	XBFZZ	5975-01-012-5445	80063	SM-B-561855		EA	1
7	2	PAFZZ	5325-00-281-8638	96906	MS21332-1		EA	2
7	3	XBFZZ		88044	AN509C416R20		EA	4
7	4	XBFZZ		80063	SM-D-561850		EA	1
7	5	XBFZZ		96906	MS16532-192		EA	1
7	6	XBFZZ		88044	AN507CA2BR12		EA	4
7	7	PAFZZ	5306-00-156-2341	88044	AN4C11A		EA	2
7	8	PAFZZ	5305-00-059-3660	96906	MS51958-64		EA	1
7	9	XBFZZ		80063	SM-C-561851		EA	1
7	10	XBFZZ		80063	SM-C-561859-1		EA	1
7	11	XBFZZ		80063	SM-D-560051-1		EA	1
7	12	PAFZZ	5985-00-233-9251	80063	SM-D-561849		EA	1



EL 21P008

Figure 8. Brake Assembly.

SECTION II		TM11-5985-334-30P						
(1)	(2)	(3)	(4)	(5)	(6)	(7)	(8)	
ILLUSTRATION		NATIONAL			DESCRIPTION		QTY	
(A)	(B)	STOCK	FSCM	PART		USABLE ON CODE	INC	
FIG	ITEM	NUMBER		NUMBER			IN	
NO	NO						UNIT	
8	1	PAFZZ	3040-00-138-5651	80063	SM-C-561812		EA	1
8	2	XBFZZ		80063	SM-C-561816		EA	1
8	3	PAFZZ	5310-00-268-6025	88044	AN315C5R		EA	1
8	4	PAFZZ	5306-00-180-1921	88044	AN5C12A		EA	2
8	5	XBFZZ		80063	SM-B-561847		EA	1
8	6	XBFZZ		80063	SM-B-561818		EA	2
8	7	PAFZZ	5306-00-156-2344	88044	AN4C14A		EA	2
8	8	XBFZZ		80063	SM-B-561819-1		EA	1
8	9	XBFZZ		96906	MS35678-19		EA	1
8	10	XBFZZ		80063	SM-B-561820-1		EA	1
8	11	XBFZZ		80063	SM-C-561817-1		EA	1
8	12	XBFZZ	3040-00-427-7749	80063	SM-C-561814		EA	1

SECTION IV

NATIONAL STOCK NUMBER AND PART NUMBER INDEX

TM11-5985-334-30P

STOCK NUMBER	FIGURE NO	ITEM NO	STOCK NUMBER	FIGURE NO	ITEM NO
5305-00-050-9234	3	1	5985-00-233-9247	2	2
5305-00-052-9802	5	9	5985-00-233-9248	1	8
5305-00-054-5646	4	21	5985-00-233-9249	1	15
5305-00-054-6649	6	5	5985-00-233-9251	7	12
5305-00-054-6668	6	9	5985-00-233-9252	1	9
5305-00-054-9242	5	24	5985-00-237-0728	1	4
5315-00-058-9698	6	13	5985-00-242-4286	2	1
5315-00-058-9756	6	1	5315-00-242-7272	4	16
5305-00-059-3660	7	8	5985-00-244-1693	2	3
5310-00-059-9263	2	13	5310-00-263-2862	4	3
5310-00-059-9264	2	5	5310-00-263-2862	5	11
5305-00-066-7328	6	11	5310-00-268-6025	8	3
5305-00-068-5287	5	20	5325-00-281-8638	7	2
3040-00-138-5651	8	1	5365-00-286-8718	5	23
5306-00-150-9527	4	25	4030-00-291-9354	1	11
5306-00-156-2327	4	7	4030-00-298-1382	1	21
5306-00-156-2332	4	27	5820-00-395-8807	1	1
5306-00-156-2339	5	2	5975-00-405-4505	1	17
5306-00-156-2341	7	7	5975-00-405-4506	1	22
5306-00-156-2343	5	5	5975-00-405-4507	1	5
5306-00-156-2344	8	7	5306-00-405-4588	1	6
5340-00-157-7631	5	10	3040-00-427-7749	8	12
5340-00-157-7649	4	28	5360-00-469-3710	6	2
5340-00-157-7657	4	26	5310-00-550-5054	3	3
4030-00-159-7127	1	7	5306-00-582-9009	5	15
5310-00-167-0806	4	15	5306-00-582-9588	2	6
5310-00-167-0812	2	14	5365-00-598-1840	4	9
5120-00-169-2664	1	20	5310-00-685-3744	4	10
5306-00-180-1921	8	4	5305-00-781-9478	6	7
4030-00-187-5261	1	2	5365-00-804-7645	4	12
4030-00-189-6154	1	13	5310-00-823-8835	4	5
4030-00-189-6155	1	16	5315-00-840-0906	2	9
4030-00-189-6156	1	10	5305-00-913-4084	5	16
4030-00-189-6237	1	12	5310-00-933-8118	4	20
5985-00-189-6606	4	23	5310-00-933-8120	3	2
5985-00-189-6629	5	12	5310-00-982-4988	4	18
5985-00-189-6632	5	17	5310-00-982-4988	5	3
5340-00-200-8630	2	7	5975-01-012-5445	7	1
5305-00-206-3677	6	12	5985-01-124-8751	1	19
5305-00-207-2793	4	17	5985-01-133-3584	1	18
5120-00-224-4105	1	3	5340-01-146-7450	2	4

FSCM	PART NUMBER	FIGURE NO	ITEM NO	FSCM	PART NUMBER	FIGURE NO	ITEM NO
				96906	MS16562-227	6	1
				96906	MS16624-4050	4	12
				96906	MS16633-4015	4	9
				96906	MS16633-4037	5	23
				96906	MS21045C3	4	3
				96906	MS21045C3	5	11
				96906	MS21045C4	4	18
				96906	MS21045C4	5	3
				96906	MS21045C5	4	5
				96906	MS21045C6	2	5
				96906	MS21046-C3	2	13
				96906	MS21332-1	7	2
				96906	MS24585C155	6	2
				96906	MS24693C27	6	11
				96906	MS24694-C54	2	12
				96906	MS24694C98	4	17
				96906	MS35338-135	4	20
				96906	MS35338-138	3	2
				96906	MS35678-19	8	9
				96906	MS35678-32	4	16
				96906	MS51957-25	6	5
				96906	MS51957-43	6	9
				96906	MS51957-68	3	1
				96906	MS51958-64	7	8
				80205	NAS1191C3P4	5	16
				80063	SC-B-99880	1	6
				80063	SC-C-76220	2	7
				80063	SC-C-99881	1	7
				80063	SC-D-66302	1	1
				80063	SM-B-423625	2	11
				80063	SM-B-561809-1	5	22
				80063	SM-B-561810-1	5	21
				80063	SM-B-561818	8	6
				80063	SM-B-561819-1	8	8

FSCM	PART NUMBER	FIGURE NO	ITEM NO	FSCM	PART NUMBER	FIGURE NO	ITEM NO
80063	SM-B-561820-1	8	10	80063	SM-C-561860	1	19
80063	SM-B-561821-1	5	18	80063	SM-C-561864	1	15
80063	SM-B-561822-1	5	19	80063	SM-C-561894-1	1	14
80063	SM-B-561823	4	24	80063	SM-C-561895-1	1	8
80063	SM-B-561825	4	13	80063	SM-C-561898	1	10
80063	SM-B-5618261	4	14	80063	SM-C-728942	2	10
80063	SM-B-561827-1	4	6	80063	SM-D-558718-9	4	22
80063	SM-B-561834-1	6	15	80063	SM-D-560051-1	7	11
80063	SM-B-561835-1	4	8	80063	SM-D-561801	2	2
80063	SM-B-561836-32	6	18	80063	SM-D-561805	4	19
80063	SM-B-561842-1	6	8	80063	SM-D-561808	5	12
80063	SM-B-561843-1	6	3	80063	SM-D-561811	5	17
80063	SM-B-561847	8	5	80063	SM-D-561828-2	6	14
80063	SM-B-561848-1	4	26	80063	SM-D-561845	4	23
80063	SM-B-561848-2	4	28	80063	SM-D-561846	4	1
80063	SM-B-56185-1	5	6	80063	SM-D-561849	7	12
80063	SM-B-561854-1	5	13	80063	SM-D-561850	7	4
80063	SM-B-561855	7	1	80063	SM-D-561868	1	16
80063	SM-B-561856	5	1	80063	SM-D-561869	1	13
80063	SM-B-561857-1	5	4	80063	SM-D-561874	1	4
80063	SM-B-561871-1	3	5	80063	SM-D-561875	2	1
80063	SM-B-561872-1	3	4	80063	SM-D-561878	1	18
80063	SM-B-561884	1	9	80063	SM-D-561881	2	3
80063	SM-B-561911	4	11	80063	SM-D-561883	2	4
80063	SM-B-561912	6	10	80063	SM-D-561885	1	5
80063	SM-B-561916-1	6	16	80063	SM-D-561887	1	22
80063	SM-B-561923-1	5	10	80063	SM-D-561889	1	17
80063	SM-C-561812	8	1	80063	SM-D-561896	1	12
80063	SM-C-561814	8	12	80063	SM-D-561899	1	20
80063	SM-C-561816	8	2	80063	SM-E-561807	5	26
80063	SM-C-561817-1	8	11	80063	SM-E-561882	2	8
80063	SM-C-561844-1	6	6	88044	SMB-561917-1	5	14
80063	SM-C-561851	7	9	73734	23021	4	21
80063	SM-C-561859-1	7	10				

LATEST NATIONAL STOCK NUMBER AND PART NUMBER ASSIGNMENTS

STOCK NUMBER	FIGURE NO.	ITEM NO.
5305-00-527-4414	5	7

FSCM	PART NUMBER	FIGURE NO.	ITEM NO.
88044	AN509C10R10	5	7
88044	AN509C616R17	5	25
88044	AN509C616R26	5	8

RECOMMENDED CHANGES TO EQUIPMENT TECHNICAL PUBLICATIONS



THEN... JOT DOWN THE DOPE ABOUT IT ON THIS FORM. CAREFULLY TEAR IT OUT. FOLD IT AND DROP IT IN THE MAIL!

SOMETHING WRONG WITH THIS PUBLICATION?

FROM (PRINT YOUR UNIT'S COMPLETE ADDRESS)

Commander
Stateside Army Depot
ATTN: AMSTA-US
Stateside, N.J. 07703

DATE SENT

10 July 1975

PUBLICATION NUMBER

TM 11-5840-340-20P

PUBLICATION DATE

23 Jan 78

PUBLICATION TITLE

Radar Set AN/PRC-76

BE EXACT. PIN-POINT WHERE IT IS

PAGE NO	PARA-GRAPH	FIGURE NO	TABLE NO
33			
44		19	
45			

IN THIS SPACE TELL WHAT IS WRONG AND WHAT SHOULD BE DONE ABOUT IT:

For item 2, change the NSN to read: 5835-00-134-9186.
Reason: Accuracy.

Identify the cover on the junction box (item no. 5).
Reason: It is a separate item and is not called out on figure 19.

Add the cover of the junction box as an item in the listing for figure 19.
Reason: Same as above

SAMPLE

PRINTED NAME, GRADE OR TITLE AND TELEPHONE NUMBER

SSG I. M. DeSpirit of 999-1776

SIGN HERE

TEAR ALONG PERFORATED LINE

FILL IN YOUR
UNIT'S ADDRESS

FOLD BACK

DEPARTMENT OF THE ARMY

OFFICIAL BUSINESS

SAMPLE

Commander
US Army Communications-Electronics Command
and Fort Monmouth
ATTN: DRSEL-ME-MP
Fort Monmouth, New Jersey 07703

TEAR ALONG PERFORATED LINE

FILL IN YOUR
UNIT'S ADDRESS

FOLD BACK

DEPARTMENT OF THE ARMY

OFFICIAL BUSINESS

Commander
US Army Communications-Electronics Command
and Fort Monmouth
ATTN: DRSEL-ME-MP
Fort Monmouth, New Jersey 07703

TEAR ALONG PERFORATED LINE

RECOMMENDED CHANGES TO EQUIPMENT TECHNICAL PUBLICATIONS



THEN...JOT DOWN THE DOPE ABOUT IT ON THIS FORM. CAREFULLY TEAR IT OUT, FOLD IT AND DROP IT IN THE MAIL.

SOMETHING WRONG WITH THIS PUBLICATION?

FROM: (PRINT YOUR UNIT'S COMPLETE ADDRESS)

DATE SENT

PUBLICATION NUMBER

TM 11-5985-334-30P

PUBLICATION DATE

21 Sept 1983

PUBLICATION TITLE

Mast AB-621/G

BE EXACT PIN-POINT WHERE IT IS

PAGE NO.	PARA-GRAPH	FIGURE NO.	TABLE NO.

IN THIS SPACE TELL WHAT IS WRONG AND WHAT SHOULD BE DONE ABOUT IT:

TEAR ALONG PERFORATED LINE

PRINTED NAME GRADE OR TITLE AND TELEPHONE NUMBER

SIGN HERE

DA FORM 2028-2
1 JUL 79

PREVIOUS EDITIONS ARE OBSOLETE

P.S...IF YOUR OUTFIT WANTS TO KNOW ABOUT YOUR RECOMMENDATION MAKE A CARBON COPE OF THIS AND GIVE IT TO YOUR HEADQUARTERS.

FILL IN YOUR
UNIT'S ADDRESS



FOLD BACK

DEPARTMENT OF THE ARMY



OFFICIAL BUSINESS

Commander
US Army Communications-Electronics Command
and Fort Monmouth
ATTN: DRSEL-ME-MP
Fort Monmouth, New Jersey 07703

TEAR ALONG PERFORATED LINE

FILL IN YOUR
UNIT'S ADDRESS

FOLD BACK

DEPARTMENT OF THE ARMY

OFFICIAL BUSINESS

Commander
US Army Communications-Electronics Command
and Fort Monmouth
ATTN: DRSEL-ME-MP
Fort Monmouth, New Jersey 07703

TEAR ALONG PERFORATED LINE

By Order of the Secretary of the Army:

Official:

ROBERT M. JOYCE
Major General United States Army
The Adjutant General

JOHN A. WICKMAN JR.
General, United States Army
Chief of Staff

DISTRIBUTION:

To be distributed in accordance with DA Form 12-51, Direct & General Support Maintenance Requirements for AB-621/G.

